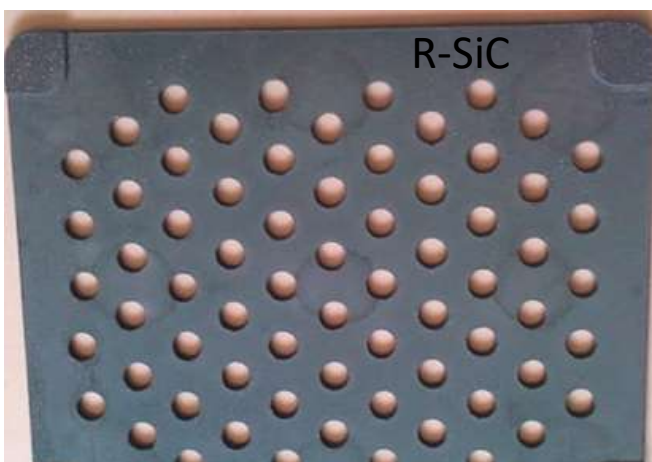
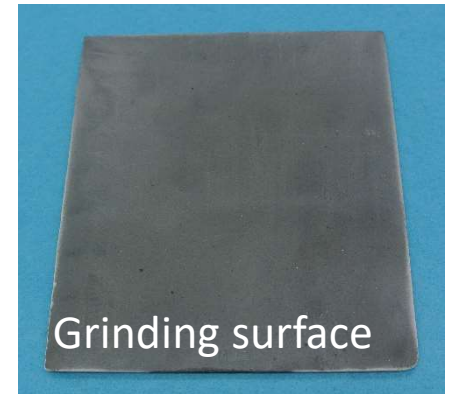
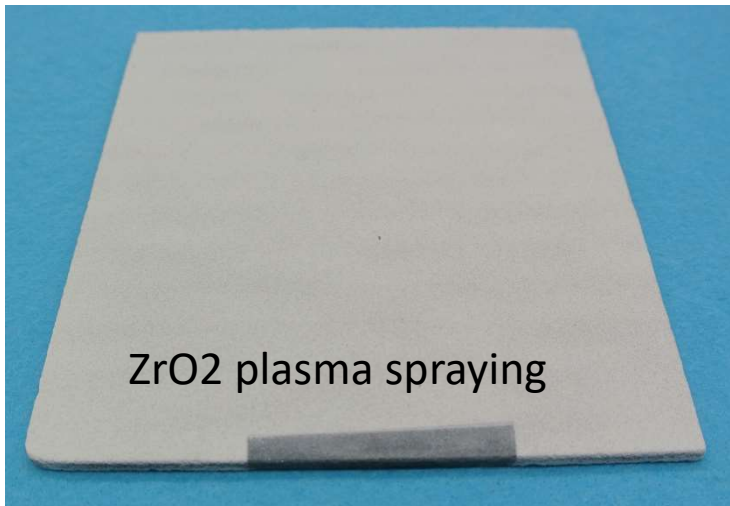
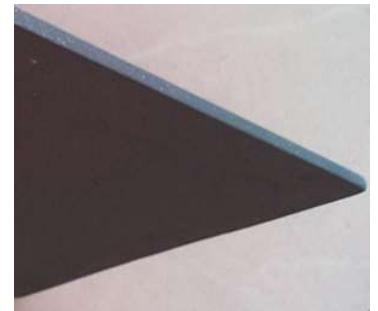
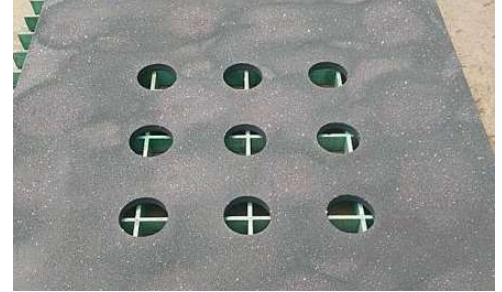




Refractory SiC

Characteristics

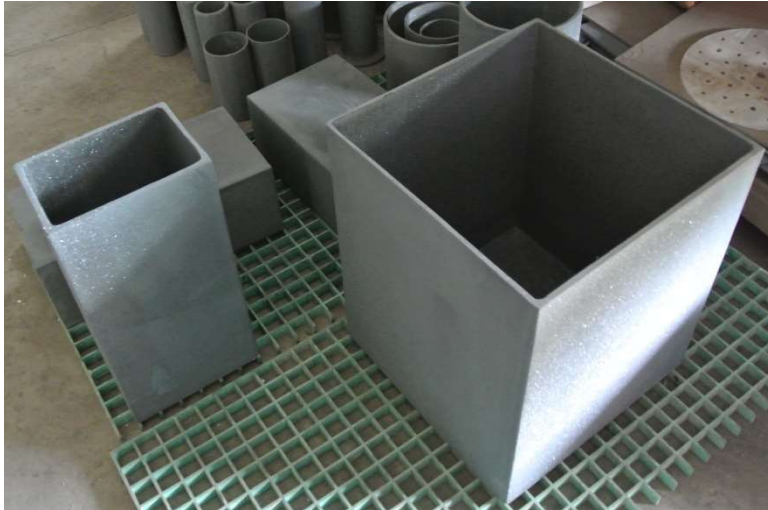
- Recrystallized Silicon Carbide(R-SiC)
High heat resistance
Thermal expansion of R-SiC is small,
Strong in heat shock.
- Metal Si impregnation Silicon Carbide(Si-SiC)
Gas type burner nozzle
The deformation is small by the pores is very small.
- Si_3N_4 bond/ SiO_2 bond Silicon Carbide(N/G-SiC)
Heatproof 1450°C & suitable for setting for sintering heavy load.
Excellent high-temp deflection characteristics,
thinner than AlO_3 setting is possible.



Luck Design Company, Limited

TEL; +81 944 85 9536

E-mail; luckdesign.info@gmail.com



	Type	R-SiC	Si-SiC	N-SiC		G-SiC
				Standerd	Strong	
Density	g/cm ³	2.7	3	2.7	2.8	2.75
Porosity	%	17-19	0.1	15	12	6
Bending strength 20°C	MPa	90	250	180	200	500
1200°C		100				
Young's modulus	Gpa	200	330	220	250	280
Thermal Conductivity	W/m·K(RT)	22	45	15	17	13
Coefficint of thermal expantion	10 ⁻⁶ /°C(RT ~1000°C)	4.8	4.5	4.5	4.4	4.8
Thermal Shock resistance	°C	700	600	600	500	500
Maximum temperature	°C	1650	1380	1450	1450	1450
SiC purity	%	98.5				

Made in China

Luck Design Company,Limited

TEL; +81 944 85 9536

E-mail; luckdesign.info@gmail.com